



Stylish Dental Office In the Pearl District

Porter Glisan Building, 1211 NW Glisan, Portland, OR 97205

Size: 2,998 SF Rate: \$24/SF NNN

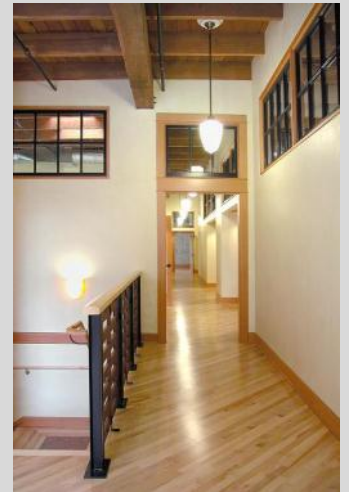
Features include:

- Historic building with designer finishes | Corner space
- 12 ft ceilings | Wood floors and columns
- Large reception area | Private offices
- Multiple work stations | Street signage
- Private restrooms | Large operable windows
- Elevator | Easy access to restaurants/shopping

TURNKEY DENTAL SPACE. EQUIPMENT EXCLUDED

READY FOR OCCUPANCY JUNE 1, 2012

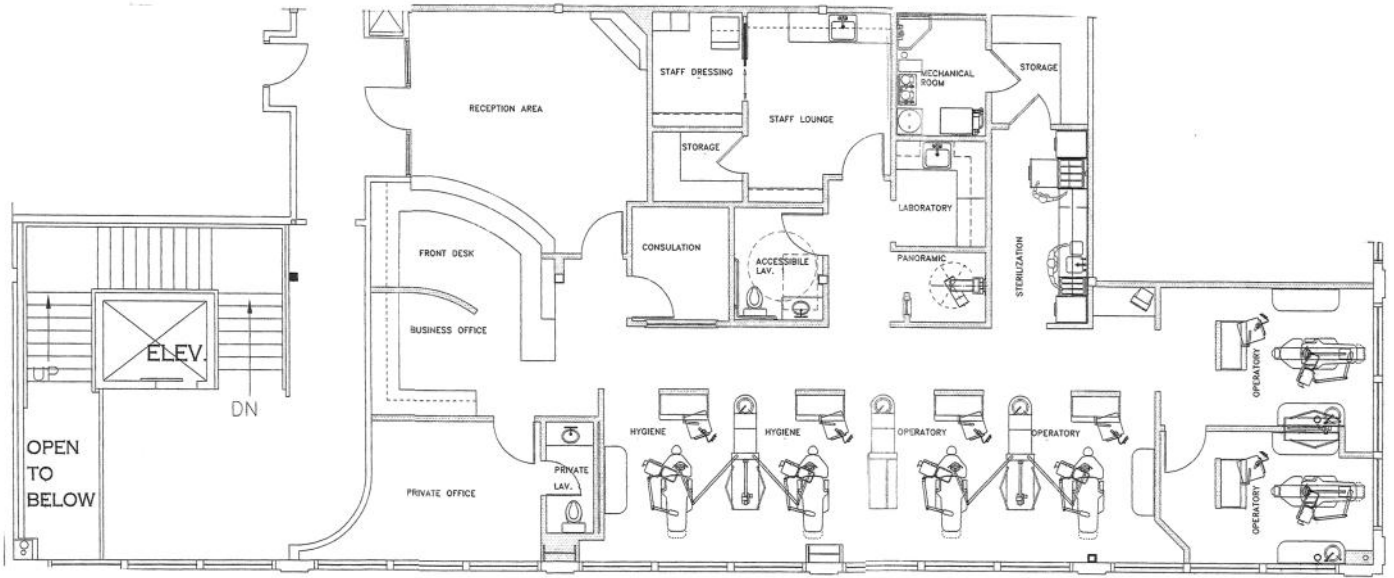
(See back for floor plan)



Craig Kelly or Steve Robinson

503-224-2446 | venerableproperties.com





NW Glisan Street